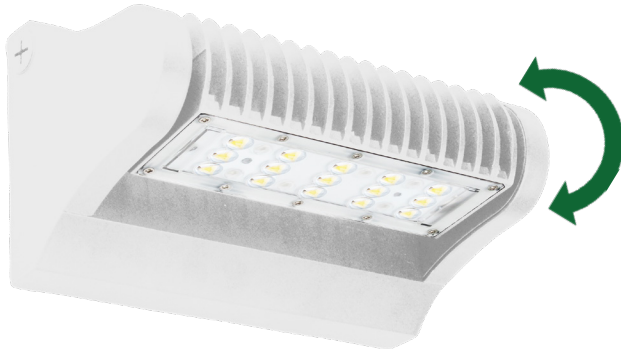


# LW360 SERIES Outdoor Lighting

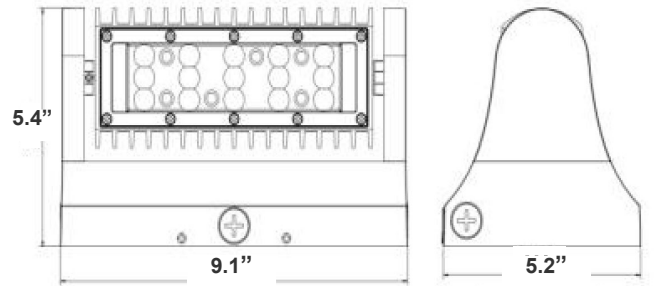
LW360-40W-30K-WH  
LW360-40W-50K-WH

**WESTGATE**  
THE FUTURE IS HERE...AND IT'S QUITE BRIGHT!

Customer Name: \_\_\_\_\_  
Project Name: \_\_\_\_\_  
Note: \_\_\_\_\_ | Type: \_\_\_\_\_



Selection:



5.4"(H) x 5.2"(W) x 9.1"(L)

Ideal for general site lighting, alleys, loading docks, doorway, pathway, and parking areas.

## Features

- Three 1/2" Threaded Knockouts: 1 Bottom. 1 On Each Side
- TIR Optic Lens - TYPE II
- Die-Cast Aluminum Housing With Powder Coat Finish
- 7-Year Warranty

## Technical Specifications

### Electrical:

- Voltage: 120-277VAC 60Hz
- Wattage: 40W
- Power Factor: >0.95
- Efficacy: 135 LPW

### Mechanical:

- Die-Cast Aluminum With Powder Coat White Finish
- TIR Optic Lens - TYPE II
- Includes Mounting Hardware
- Operating Temperature: -40°F -104°F
- Three 1/2" Threaded Knockouts: 1 Bottom. 1 On Each Side
- 7-Year Warranty
- IP65, Suitable for Wet Locations
- Light Head rotates 350°

### Lighting:

- Chip: Philips Lumileds LEDs
- TIR Optic Lens - TYPE II
- Total Lumens: 5400LM
- Color Temperatures: 3000K/ 5000K
- Color Rendering Index: CRI ≥ 80
- Beam Angle: 60°
- Rated life: 70,000 Hrs

### Applications:

- General site Lighting
- Alleys
- Loading docks
- Doorways
- Pathways
- Parking areas

### Other Models:

- 25W | 3375LM | LW360-25W-30K-WH
- 25W | 3375LM | LW360-25W-50K-WH

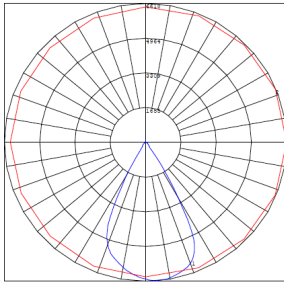
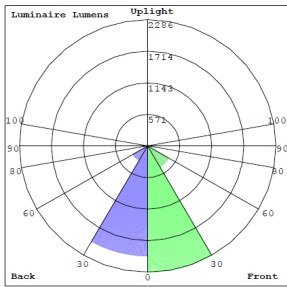


Phone: (877) 805-2252 | Fax: (877) 805-2252  
www.westgatemfg.com | www.westgatecontrols.co

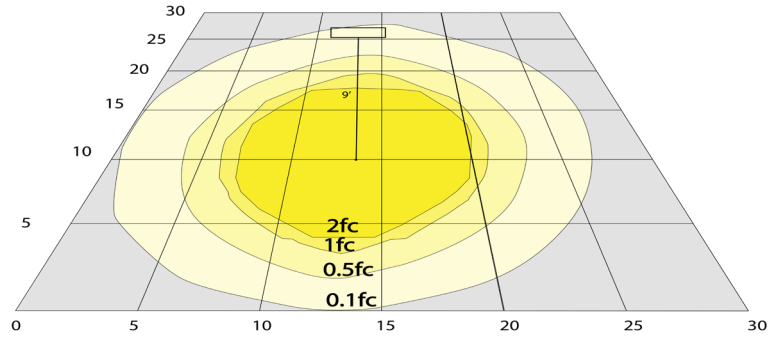


WG-Z9-Z9-ZZ

## Photometrics: LW360-40W-WH



BUG Rating: B3-U2-G1



Area 30'x 30' Mounting Height: 9'

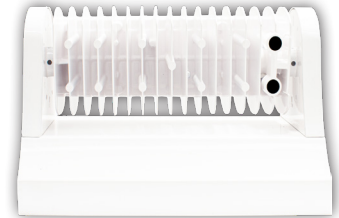
## Other Views:



Side View



Front View



Back View

## Performance Table: LW360-40W-WH

MODEL NO.	Wattage	Voltage	Lumens	Color Temp.	BUG Rating	LPW
LW360-40W-30K-WH	40W	120~277V	5400LM	3000K	B3-U2-G1	135
LW360-40W-50K-WH	40W	120~277V	5400LM	5000K	B3-U2-G1	135

## Sample Ordering

**Model**   **Wattage**   **Color Temp.**   **Housing**

LW360 - 40W -  - WH  
 3000K  
 5000K

### Accessory:

Blank = No Option For Accessories

LW360-SH1= SHROUD FOR LW360 SERIES, BRONZE FINISH (CAN BE PAINTED IN WHITE)

### Factory-Installed Options:

Blank = No Option For Accessories

OPT-EM-LW360= EMERGENCY BACKUP BATTERY, BACK BOX

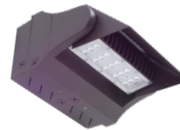
OPT-SEN-LW360-3MRLV-5= PROGRAMMABLE MICROWAVE BI-LEVEL

OPT-CLR-85= COLOR PAINT

OPT-LW360-PC-B = PHOTOCELL 120-277V

WEC-7RC = OPTIONAL REMOTE

### ACCESSORY:



LW360-SH1  
 SHOWN WITH EM BOX  
 (CAN BE PAINTED)

### FACTORY-INSTALLED OPTIONS:



OPT-EM-LW360  
 SHOWN WITH MOTION SENSOR



WEC-7RC



OPT-LW360-PC-B



OPT-SEN-LW360-3MRLV-5

## Example:

1. LW360-40W-30K-WH

(FOR LW360 40W 3000K FIXTURE 120-277V)

2. LW360-40W-30K-WH  
 LW360-SH1

(FOR LW360 40W 3000K FIXTURE 120-277V)  
 (SHROUD FOR LW360 SERIES)

3. LW360-40W-30K-WH  
 LW360-SH1  
 OPT-EM-LW360

(FOR LW360 40W 3000K FIXTURE 120-277V)  
 (SHROUD FOR LW360 SERIES)  
 (EMERGENCY BACKUP BATTERY, BACK BOX)

